



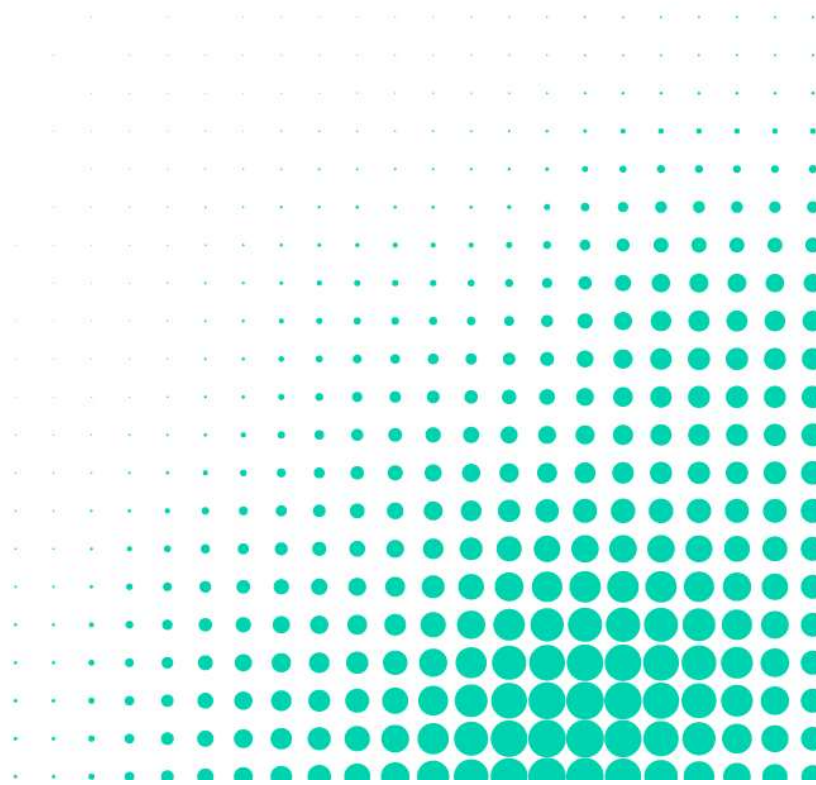
Australian Psychology Accreditation Council (APAC)

# Accreditation Assessment

## Summary Report

### University of New South Wales

Last updated: 21 March 2025





## Contents

Context .....	3
Assessment timeline .....	4
Findings .....	5
Accreditation status .....	5
Maintaining accreditation .....	5
Summary of findings .....	6
Conditions .....	7
Monitoring .....	7
Recommendations .....	9
Commendations .....	9



## University of New South Wales – 2024 to 2028 Cycle

### Context

<b>Higher education provider</b>	University of NSW (UNSW)
<b>Academic organisational unit (AOU)</b>	School of Psychology
<b>Campus</b>	Kensington
<b>Assessment type</b>	Monitoring Visit (out of cycle follow up)
<b>Accreditation period</b>	From 1 January 2024 to 31 December 2028
<b>Accreditation standard</b>	<a href="#">Accreditation standards for psychology programs (effective 1 January 2019, version 1.2)</a>



## Assessment timeline

Dates	Assessment activities
15/07/2024	Provider submits accreditation documentation to APAC
24/07/2024 – 24/09/2024	APAC conducts on-paper assessment
30/07/2024	APAC assessment team meeting 1 (align on-paper assessment)
05/09/2024	Provider submits further information
10/09/2024	APAC assessment team meeting 2 (site-visit preparation)
25/09/2024	Virtual monitoring site visit
02/10/2024	Provider submits further information
28/10/2024	Accreditation Assessment Committee (AAC) endorses draft assessment report
19/11/2024	Provider receives draft assessment report
14/01/2025	Provider confirmed that the draft assessment report is accepted as it is
10/02/2025	AAC determines assessment outcomes



## Findings

APAC thanks UNSW's discipline lead, academic staff, supervisors, and students for their cooperation.

## Accreditation status

### Maintaining accreditation

The following program remains accredited until **31 December 2028**:

Program title	Campus	Level	Sequence	Program status
Master of Clinical Neuropsychology	Kensington	Level 4	6th year	Accredited with conditions



## Summary of findings

### Standard 1: Public safety is assured

#### Level 4 Clin Neuro

Substantially met

### Standard 2: Academic governance and quality assurance processes are effective

#### Level 4 Clin Neuro

✓

### Standard 3: Program of study, design, delivery and resourcing enable students to achieve the required graduate competencies

#### Level 4 Clin Neuro

✓

### Standard 4: Students are provided with equitable and timely access to information and support

#### Level 4 Clin Neuro

✓

### Standard 5: Assessment is fair, reliable and valid

#### Level 4 Clin Neuro

✓



## Conditions

Further evidence is required to demonstrate the Accreditation Standards are met.

Program levels	Criteria	Issues identified	Information required	Due dates
Level 4 Clin Neuro	1.3, 1.9, 1.10	Placement activities	A range of de-identified samples of completed in Semester 2 2024 placement logbooks to demonstrate that students can practice competently and safely and that placements and supervision are sufficient in duration.	30/04/2025

## Monitoring

Monitoring is required to ensure the *Accreditation Standards* continue to be met upon delivery of the program.

Program levels	Criteria	Issues identified	Information required	Due dates
Level 4 Clin Neuro	1.8, 3.7	Placement activities	A range of de-identified samples of completed in Semester 2 2024 placement logbooks to demonstrate that students receive sufficient in duration supervision by the Psychology Board of Australia-approved endorsed psychologists during their placements.	30/04/2025
Level 4 Clin Neuro	2.2	External benchmarking	Updates on the progress and outcomes of the external benchmarking activities are to be provided as part of the annual report process.	30/04/2025 30/04/2026
Level 4 Clin Neuro	3.7	Professional practice education in a range of settings	Evidence demonstrating that students obtain professional practice education in a range of settings, including in the understanding and management of disorders across age ranges. Evidence should include:	30/04/2025



Program levels	Criteria	Issues identified	Information required	Due dates
Level 4 Clin Neuro	3.9, 5.1, 5.2, 5.3	Learning outcomes and assessment	<ul style="list-style-type: none"> <li>a range of samples of completed de-identified students' placement logbooks, demonstrating the direct client contact hours and activities, including details of the types and ages of clients seen by students,</li> <li>tracking spreadsheet in relation to student placements and specifically hours/cases demonstrating the diversity of age range.</li> </ul> <hr/> Evidence demonstrating that all learning outcomes (within Standard 3 Program of study, criteria 3.2 and 3.8), and including the application of the principles of inter-professional learning (IPL) and practice (related to criterion 3.9) are sufficiently taught, articulated, and appropriately assessed as required learning outcomes. Evidence should include: <ul style="list-style-type: none"> <li>a range of samples of de-identified completed student assessments from Semester 2 2024 units.</li> </ul>	30/04/2025





## Recommendations

The assessment team offers the following recommendations for continuous improvement:

- to monitor staffing levels in response to the program's potential growth,
- to implement clear tracking mechanisms for student placements, ensuring comprehensive practice across the lifespan—specifically, distinguishing the number of hours dedicated to clients from different age groups.

## Commendations

The assessment team is impressed by the School of Psychology (the 'School')'s noteworthy accomplishment in rolling out a program with a Clinical Neuropsychology area of endorsement, effectively addressing industry needs at a time when several other areas of endorsement are being discontinued.

The assessment team further commends the School on the following:

- prioritizing student experience,
- providing a high level of support from academic staff.