



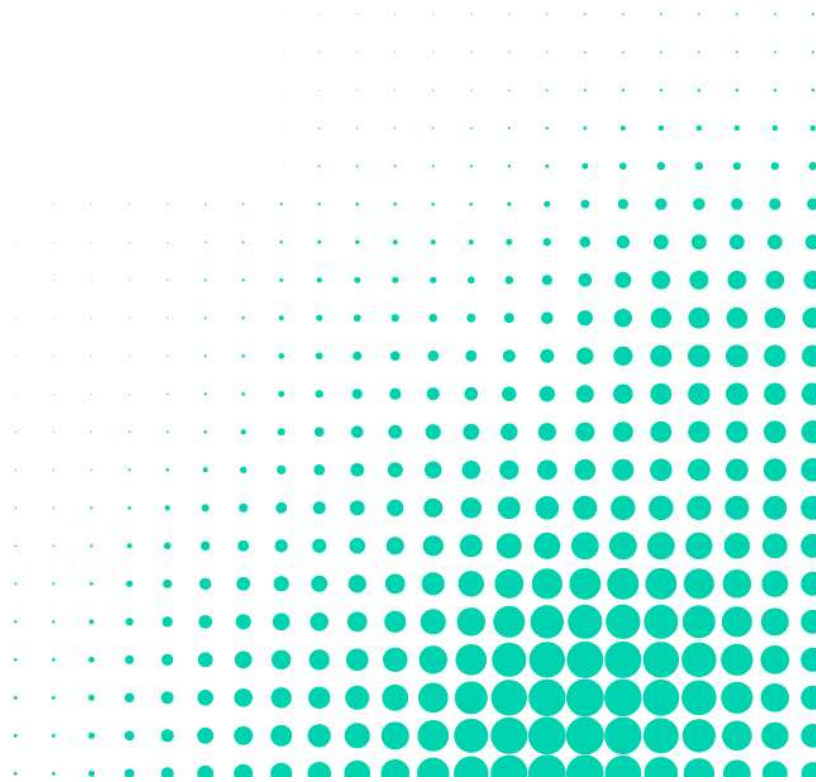
Australian Psychology Accreditation Council (APAC)

Accreditation Assessment

Summary Report

Torrens University Australia

Last updated: 21 April 2026





Contents

Context	3
Assessment timeline	4
Findings	5
Accreditation status	5
Accredited	5
Conditions.....	7
Monitoring.....	9
Recommendations	10



Torrens University Australia

Context

Higher education provider	Torrens University Australia (Torrens)
Academic organisational unit (AOU)	School of Psychological Science
Campus	Online
Assessment type	Out of cycle initial assessment
Accreditation period	13 April 2026 to 31 December 2027
Accreditation Standards	Accreditation standards for psychology programs (effective 1 January 2019, version 1.2)



Assessment timeline

Dates	Assessment activities
28/04/2025	Torrens submits NOIA
25/07/2025	Torrens submits accreditation documentation
18/09/2025 – 02/02/2026	APAC conducts on-paper assessment
02/02/2026	Accreditation Assessment Committee (AAC) endorses draft assessment report
05/03/2026	Torrens receives draft assessment report
23/03/2026	Torrens submits rejoinder to draft assessment report
13/04/2026	AAC determines assessment outcome



Findings

Accreditation status

Accredited

The following programs are accredited from **13 April 2026** until **31 December 2027**:

Program title	Campus	Level	Sequence	Program status
Graduate Diploma of Psychology	Online	Level 1	3-year bridging	Accredited with conditions



Summary of findings

Standard 1: Public safety is assured

Level 1 GDP

✓

Standard 2: Academic governance and quality assurance processes are effective

Level 1 GDP

Standard is substantially met

Standard 3: Program of study, design, delivery and resourcing enable students to achieve the required graduate competencies

Level 1 GDP

Standard is substantially met

Standard 4: Students are provided with equitable and timely access to information and support

Level 1 GDP

✓

Standard 5: Assessment is fair, reliable and valid

Level 1 GDP

Standard is substantially met



Conditions

Further evidence is required to demonstrate the Accreditation Standards are met.

Criteria	Issues identified	Shortfall Information required	Due dates
2.2, 2.3	Quality assurance and consultation processes	Evidence demonstrating that quality assurance and consultation processes have been adopted and an update on the progress and outcomes of the benchmarking exercise.	30/09/2026
3.8, 5.1, 5.2	Cultural responsiveness	Evidence demonstrating that cultural responsiveness, including with Aboriginal and Torres Strait Islander cultures, is integrated and appropriately assessed as a required learning outcome.	30/09/2026



Criteria	Issues identified	Shortfall Information required	Due dates
3.2, 5.3, 5.4	Assessment and course learning outcomes	<p>Evidence that all competencies are appropriately assessed as required learning outcomes is required.</p> <p>This includes:</p> <ul style="list-style-type: none"> • Level 1 Foundational Competencies (criterion 3.2) <ul style="list-style-type: none"> ○ 1.1 iii. psychological health and well-being ○ 1.1 iv. psychological disorders and evidence-based interventions and ○ 1.2 Apply knowledge and skills of psychology in a manner that is reflexive, culturally appropriate and sensitive to the diversity of individuals. <p>Evidence must include:</p> <ul style="list-style-type: none"> • Subject outlines, subject planners, and assessment briefs, • detailed information about moderation practices used, and • a range of samples of de-identified student assessments, when available. 	30/09/2027



Monitoring

Monitoring is required to ensure the Accreditation Standards continue to be met.

Criteria	Issues identified	Shortfall Information required	Due dates
2.2	External benchmarking	An update on the progress and outcomes of the external benchmarking exercises.	30/09/2026 30/04/2027 30/04/2028
3.5	Learning and assessment resources	Final online examples of the Graduate Diploma student experience to ensure the program has adequate learning and assessment resources. Evidence may include screenshots of <ul style="list-style-type: none"> • unit webpages • assessment requirements and submission portals; and • any other examples of online environments and learning resources relevant to this program. 	30/09/2026 30/04/2027
4.3	APAC accreditation status	An update on the programs accreditation status once accredited is required to ensure it is displayed accurately and prominently and is clearly distinguishable from any program offered that is not APAC-accredited.	30/09/2026



Recommendations

The assessment team offers the following recommendations for continuous improvement.

- The provider is encouraged to consider how the application of research methods and statistics are clearly communicated through the program and subject learning outcomes. As the provider has integrated the assessment and learning for this foundational competency across the program, it is important to ensure PLO and SLOs protect these learning activities and assessment. More specific learning outcomes may be used to achieve this.